



# ZODIAC INTERNATIONAL

DIVISION MARINE

## ZODIAC MARK III HEAVY DUTY LONG SHAFT TRANSOM

P/N Z80182

Rev 1 – Oct. 7th 09  
TECHNICAL DATA SHEET



***Still so Simple, Strong and Reliable***

The Grand Raid name is almost as old as Zodiac itself and has gone through design and feature evolutions to still be very relevant in today's market.

GR's form the backbone of many small boat fleets and are pretty much unique in its full equipment definition.

They continue to answer the needs of users worldwide.

The MK 3 HD Long Shaft is available on stock.

THIS MATERIAL CONTAINS PROPRIETARY DATA BELONGING TO ZODIAC INTERNATIONAL. UNAUTHORIZED DISCLOSURE, USE OR REPRODUCTION WILL RESULT IN LIABILITY. ZODIAC RESERVES THE RIGHT TO CHANGE THE SPECIFICATIONS OF THIS TECHNICAL DATA SHEET WITHOUT NOTICE.



# ZODIAC INTERNATIONAL

DIVISION MARINE

## BOAT DEFINITION

### CAPACITY

. maximum number of persons (ISO6185) :	9	9
. maximum payload including engine and fuel (ISO6185) :	1220 kg	2690 lb
. floorboard usable area :	2.70 m <sup>2</sup>	29.06 sq ft
. buoyancy tube volume :	1714 L	60.54 cu ft

### DIMENSIONS

. overall length :	4.70 m	15'5"
. inside length :	3.20 m	10'6"
. overall width :	1.90 m	6'3"
. inside width :	0.90 m	2'11"
. weight empty :	113 kg	249 lb
. buoyancy tube diameter :	0.50 m	1'8"
. folded dimensions :	sac 1	1.45x0.75x0.52
	bag 1	4'9"x2'6"x1'8"
	sac 2	1.05x0.77x0.18
	bag 2	3'5"x2'6"x0'7"

### SAFETY / INFLATION

. number of airtight compartments on main buoyancy tube :	5	5
. inflatable keel :	1	1
. inflation pressure :	0.24 bar	3.4 psi
. design category (EC 94/25) :	C	

### ENGINE POWER

. shaft length :	long	20"
. recommended power :	38 kW	50 HP
. maximum power :	49 kW	65 HP
. maximum engine weight :	110 Kg	243 lbs

### FABRIC

. buoyancy tubes :	black , <b>1880 dtx</b> , polyamide, hypalon neoprene
. bottom :	black, <b>1880 dtx</b> , polyamide, hypalon neoprene

THIS MATERIAL CONTAINS PROPRIETARY DATA BELONGING TO ZODIAC INTERNATIONAL. UNAUTHORIZED DISCLOSURE, USE OR REPRODUCTION WILL RESULT IN LIABILITY. ZODIAC RESERVES THE RIGHT TO CHANGE THE SPECIFICATIONS OF THIS TECHNICAL DATA SHEET WITHOUT NOTICE.



**STANDARD EQUIPMENT**

**TRANSOM BLACK VARNISHED MARINE PLYWOOD**

. large flow self-bailer w/ sleeve :	1
. standard self bailer w/ plug :	1
. aluminum engine mounting plate :	1
. engine transom pad (marine plywood) black :	1
. transom triangular deflector :	2

**FLOORBOARD**

. rigid floorboards (anodized aluminum) :	3 parts
. bow floorboard (marine plywood) :	2
. stringers, anodized aluminum :	2

**VALVES**

. inflation valves :	5
. keel inflation valve :	1

**REINFORCEMENTS**

. all around rubbing strake, flat profile, black :	1
. upper non-slip reinforcement panels, black :	2
. large transom ovoid reinforcement (1100 dtx) :	1 each side
. rubbing strakes underneath keel, black :	1
. rubbing strakes underneath tubes, black :	2 + 2
. transom stainless steel protection shoe :	1

**HANDLING**

. carrying handles, molded PVC :	4
. bow handle :	1
. exterior lifeline (all around) :	1
. interior small D rings (stainless steel with black coating) :	4

**TOWING**

. bow large towing D ring (stainless steel with black coating) :	2
--	---

**OTHER EQUIPMENT**

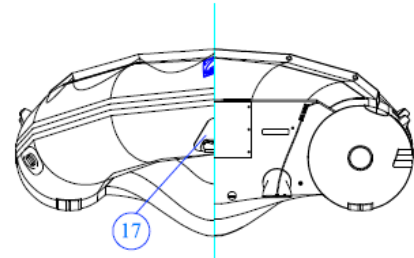
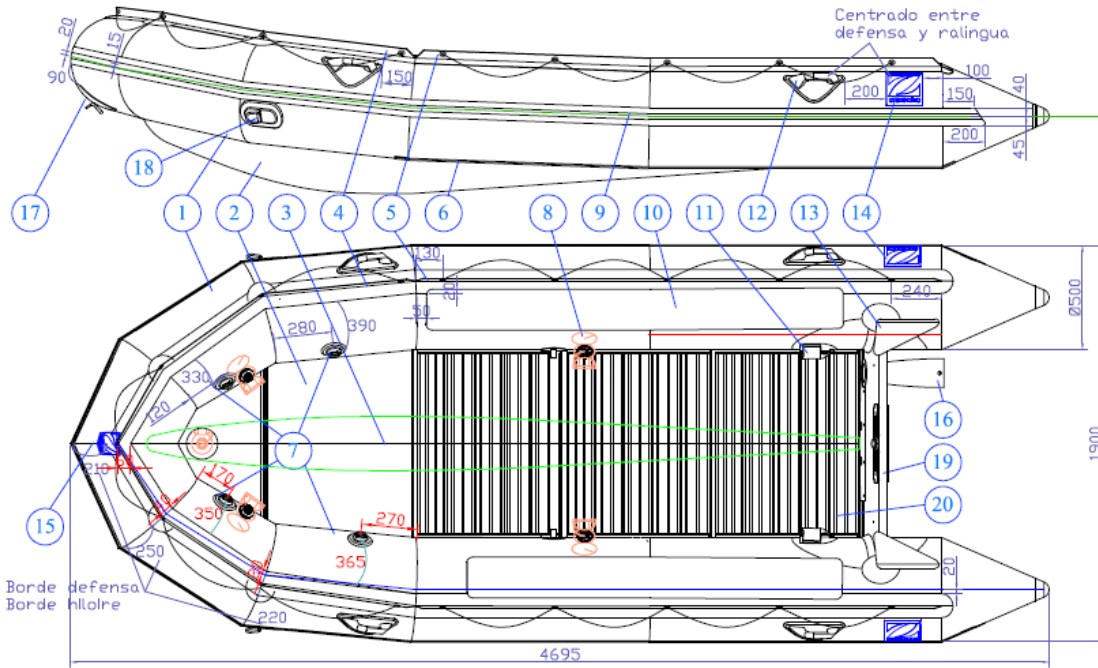
. foot bellows + hose :	1
. repair kit with pressure indicator :	1
. paddles (aluminum shaft, plastic blade) :	2
. storage bag :	2

THIS MATERIAL CONTAINS PROPRIETARY DATA BELONGING TO ZODIAC INTERNATIONAL. UNAUTHORIZED DISCLOSURE, USE OR REPRODUCTION WILL RESULT IN LIABILITY. ZODIAC RESERVES THE RIGHT TO CHANGE THE SPECIFICATIONS OF THIS TECHNICAL DATA SHEET WITHOUT NOTICE.



# ZODIAC INTERNATIONAL

## DIVISION MARINE



THIS MATERIAL CONTAINS PROPRIETARY DATA BELONGING TO ZODIAC INTERNATIONAL. UNAUTHORIZED DISCLOSURE, USE OR REPRODUCTION WILL RESULT IN LIABILITY. ZODIAC RESERVES THE RIGHT TO CHANGE THE SPECIFICATIONS OF THIS TECHNICAL DATA SHEET WITHOUT NOTICE.