

GRAND RAID

INFLATABLE MULTIPURPOSE BOAT

THE HISTORIC ZODIAC MILPRO BOAT

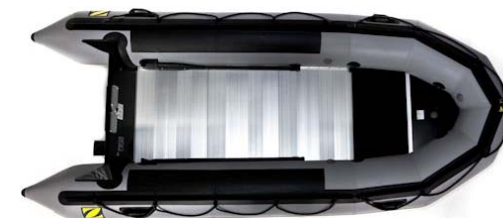
The Grand Raid name is almost as old as Zodiac Milpro boats themselves and has gone through design and feature evolutions to still be very relevant in today's market.

GR's form the backbone of many small boat fleets and are pretty much unique in its full equipment definition. They continue to answer the needs of users worldwide.

From 2009, Zodiac Milpro is proposing Grand Raid Next Generation, with a new bow shape, a reinforced fabric, new valves, a large flow self-bailer, and a long shaft transom adapted to 4-stroke engines...



- **SIMPLE**
- **STRONG**
- **RELIABLE**



MK-2 GR



MK-3 GR

	MK-2 GR		MK-3 GR	
max. number of person	7		9	
max. payload	910 kg	2006 lb	1221 kg	2692 lb
overall length	4,20 m	13' 9"	4,70 m	15' 5"
overall width	1,75 m	5' 9"	1,90 m	6' 3"
weight empty	86 kg	190 lb	112 kg	247 lb
shaft length	long – 20"		long – 20"	
max. power	50 hp	38 kW	65 hp	49 kW
max. engine weight	110 kg	242 lb	115 kg	253 lb
fabric	1100 dtx, polyester, CSM / neoprene			
folded dimensions	bag 1	1,30 x 0,68 x 0,35 m ³ 4' 9" x 2' 6" x 1' 8"	bag 1	1,45 x 0,75 x 0,52 m ³ 4' 9" x 2' 6" x 1' 8"
	bag 2	1,05 x 0,67 x 0,14 m ³ 3' 5" x 2' 6" x 0' 7"	bag 2	1,05 x 0,77 x 0,18 m ³ 3' 5" x 2' 6" x 0' 7"
floorboard	- rigid		- rigid	



rigid floorboard

Paddles with Sleeves

Safety



Tube Non-slip Panels

Resistance

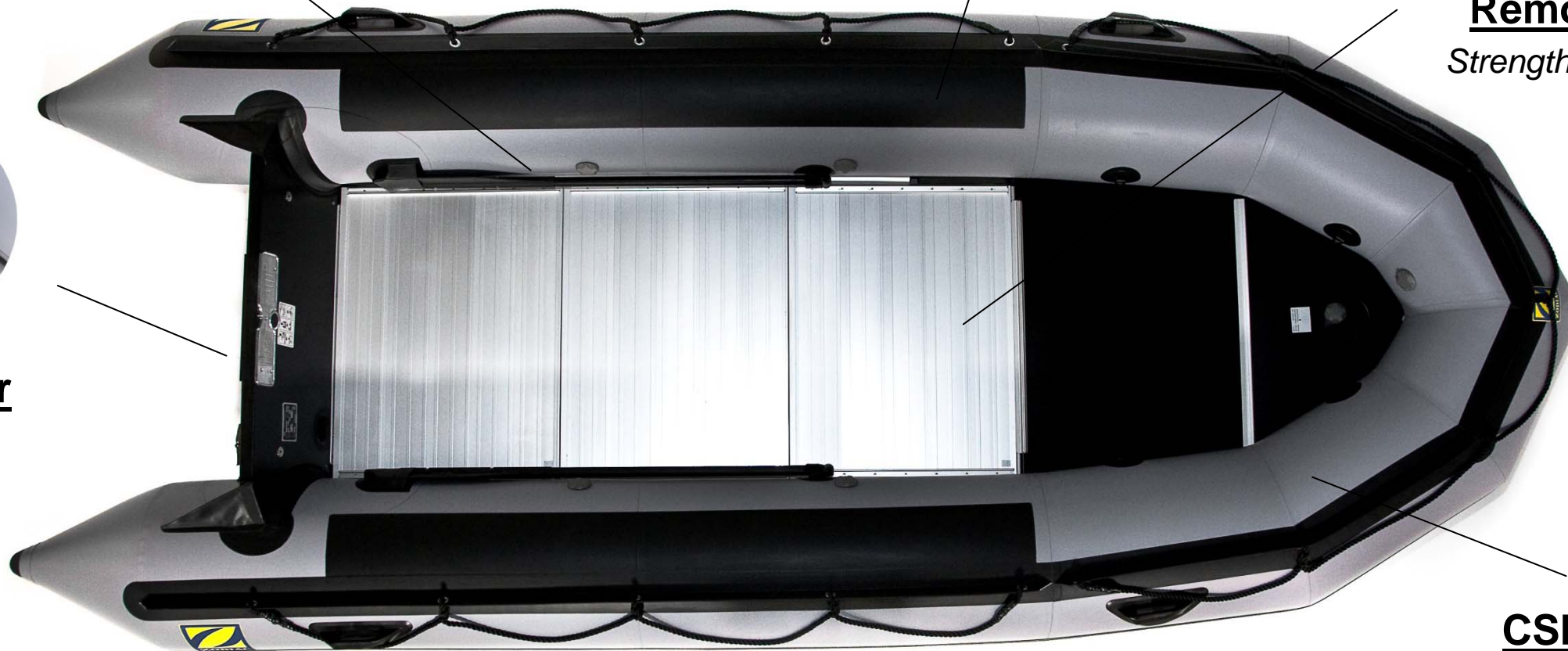


Removable Rigid Floor
Strength / Stowage / Maintenance



Large Self-bailer

Safety



Zodiac Milpro CSM / Neoprene Fabric

Resistance



Carrying Handles

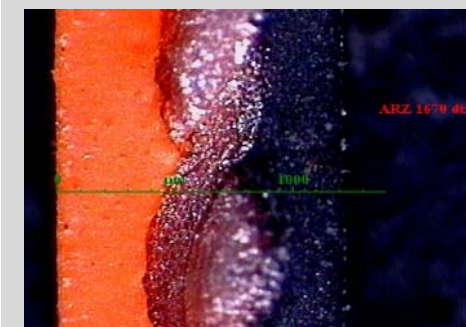
High Portability



Exterior Lifeline

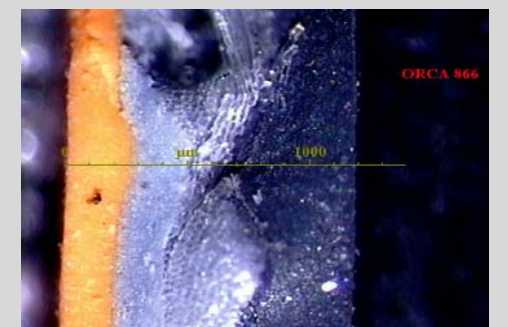
Safety

Zodiac Milpro fabric



CSM
fabric
neoprene

competitor's fabric



CSM
neoprene
fabric
neoprene