

# HEAVY DUTY

## INFLATABLE HIGH CAPABILITY BOAT

### FUTURA™ HULL SHAPE HEAVY LOADING

This is a unique range of larger inflatable boat that is designed primarily to carry heavy loads at planing speeds due to its patented FUTURA™ hull shape.

HD uses heavy materials and is reinforced throughout making it suitable for extreme service.

Even at sizes up to 7 m, they can still be rolled up into a bag and thrown into the back of a pickup truck or aircraft.



- **FUTURA™  
SHAPE**

- **HEAVY  
LOADING**

- **RESISTANT**

- **FOLDABLE**



**MK-6 HD**

**MK-6 HD**

**MK-6 HD**

	<b>MK-4 HD</b>		<b>MK-5 HD</b>		<b>MK-6 HD</b>	
max. number of person	12		15		20	
max. payload	1720 kg	3792 lb	2520 kg	5556 lb	4100 kg	9040 lb
overall length	5,30 m	17' 5"	5,85 m	19' 2"	7,00 m	23'
overall width	2,14 m	7'	2,48 m	8' 2"	2,88 m	9' 5"
weight empty	150 kg	331 lb	250 kg	551 lb	320 kg	705 lb
shaft length	long – 20"		long – 20"		long – 20"	
max. power	80 hp 2 x 40 hp	60 kW 2 x 30 kW	115 hp 2 x 50 hp	86 kW 2 x 38 kW	175 hp 2 x 70 hp	131 kW 2 x 52 kW
max. engine weight	140 kg 2 x 95 kg	308 lb 2 x 209 lb	165 kg 2 x 98 kg	363 lb 2 x 216 lb	240 kg 2 x 125 kg	529 lb 2 x 275 lb
fabric	1670 dtx, polyester, CSM / neoprene					
folded dimensions	bag 1 1,55 x 0,75 x 0,42 m <sup>3</sup> 5' 1" x 2' 6" x 1' 5"	bag 1 2,10 x 0,87 x 0,40 m <sup>3</sup> 6' 11" x 2' 10" x 1' 4"	bag 1 2,50 x 1,00 x 0,50 m <sup>3</sup> 8' 2" x 3' 3" x 1' 8"	bag 2 1,35 x 0,67 x 0,25 m <sup>3</sup> 4' 5" x 2' 2" x 0' 10"	bag 2 1,50 x 0,84 x 0,29 m <sup>3</sup> 4' 11" x 2' 9" x 0' 11"	bag 2 1,70 x 0,90 x 0,30 m <sup>3</sup> 5' 7" x 2' 11" x 1'
Floorboard	- rigid		- rigid		- rigid	



**rigid floorboard**

**Single / Twin Engine Transom**

*Flexibility*



**Exterior Lifeline**

*Safety*



**Removable Rigid Floor**

*Strength / Stowage / Maintenance*

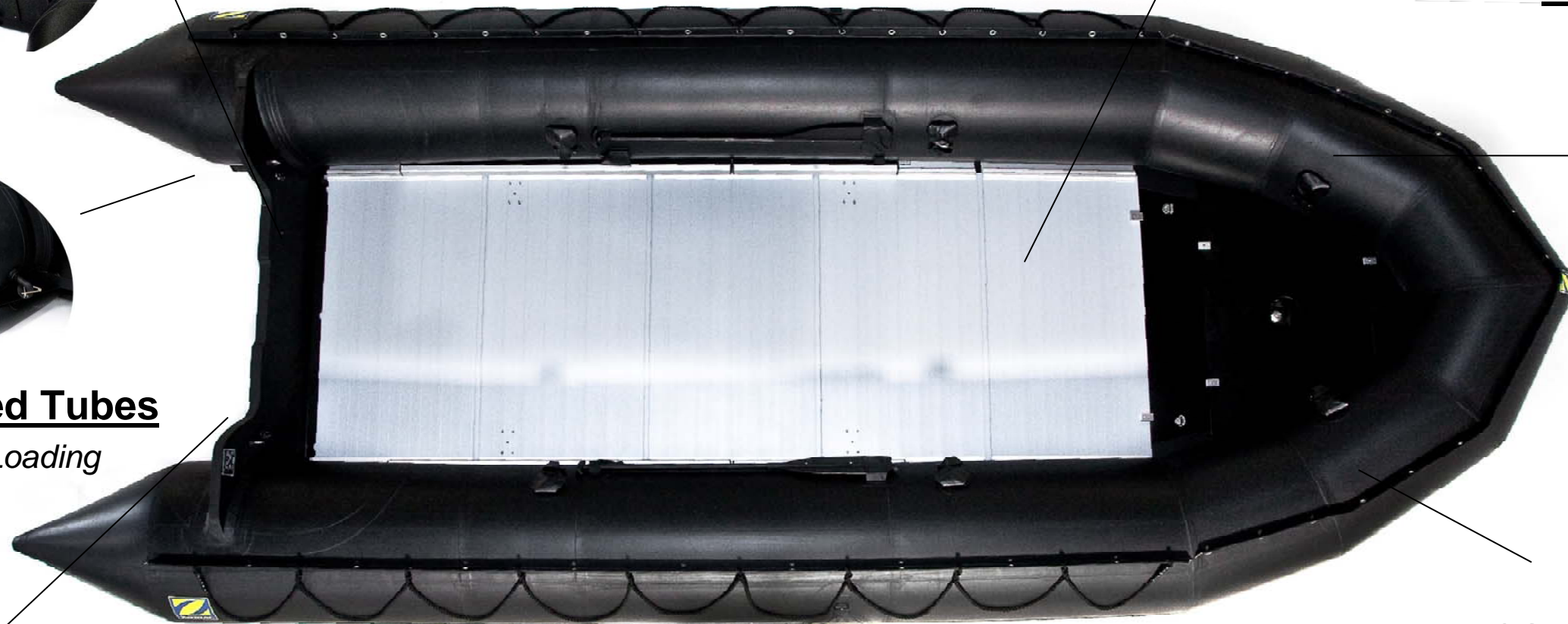
**Intercommunication / Inflation Valves**

*Safety / Inflation*



**FUTURA™ Speed Tubes**

*Maneuverability / Loading*



**Zodiac Milpro CSM / Neoprene Fabric**

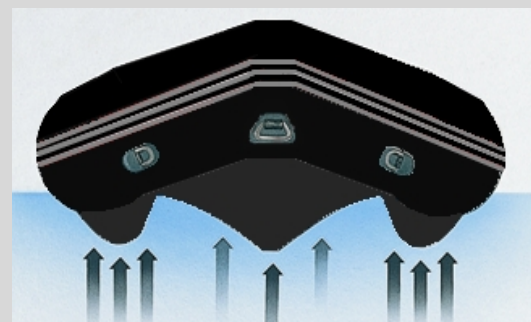
*Resistance*



**Lifting and Towing Points**

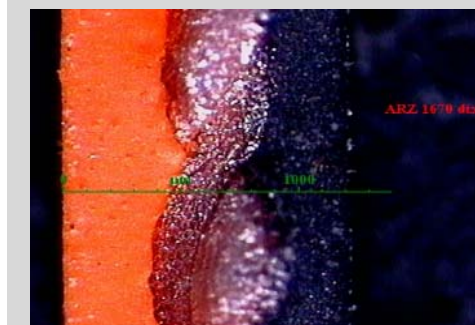
*Maneuver*

**FUTURA™ Hull Shape**



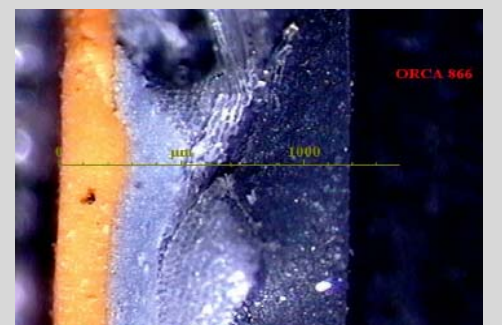
Maneuverability and speed under heavy load.

**Zodiac Milpro fabric**



CSM  
fabric  
neoprene

**competitor's fabric**



CSM  
neoprene  
fabric  
neoprene