



H753 OB LE



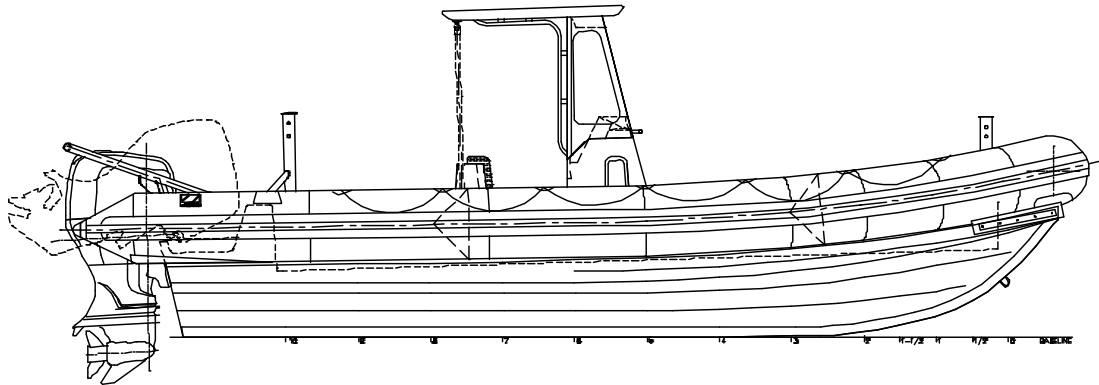
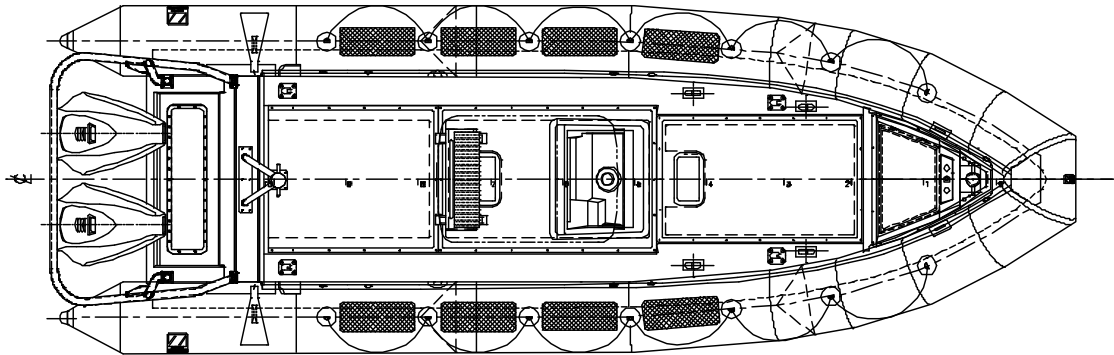
Considered the finest craft of their type in the world, the Zodiac Hurricane range of RIBS are mission specific and are used by the most knowledgeable and discriminating operators who demand the utmost in ruggedness and reliability. All Hurricane models have removable collars for ease of maintenance as well as the capability of interchanging with DuraRIB foam collars.

Zodiac Hurricane has been supplying high speed outboard powered law enforcement RIBS since the 1970's.

The Zodiac Hurricane 753 OB LE is typically used by a one or two man crew for law enforcement, fisheries patrol and harbour security missions. The deep Vee fiberglass hull and inflatable collar combined with the partially enclosed console provides the seaworthiness, crew protection, stability and maneuverability required to operate reliably and effectively in a variety of maritime environments. The ruggedized hull and collar construction and highly responsive twin outboard motor propulsion system allows the Hurricane 753 to operate safely in heavy weather and alongside other craft during enforcement operations.



GENERAL SPECIFICATIONS



PHYSICAL CHARACTERISTICS:

- Length overall – 8.05 meters (26.4 ft.)
 - Beam overall – 2.74 meters (9.0 ft.)
 - Beam (collar deflated) – 2.03 meters (6.7 ft.)
 - Collar diameter - 0.56 meters (22 in.)
 - Collar volume – 3633 liters (128 cu. Ft.)
 - Fuel capacity – 503 liters (133 US gal.)
 - Displacement (with full fuel) – 2100 kg. (4000 lbs.)
 - Max Speed – 44 Knots with 1500 kg. Payload, range 145 NM; Max HP2 x 200 HP
-



FULL TURN-KEY OB LE BOAT DESCRIPTION

Hull and deck

- Fiberglass hull and deck – Isophthalic polyester resin and balsa core; Foam flotation
- *OPTIONS*: Colour available orange, grey, black or white; SKYDEX deck covering
- **Collar**
- 5 chamber, 1670 dtx Neoprene/Hypalon inflatable tube with intercommunicating inflation/deflation valves and pressure relief valves
- Collar accessories – three Rubbing strakes, full length lifelines and non-slip step treads
- *OPTIONS*: Colour available orange, grey, black or white; Auto inflate system, Durarib upgrade;

Console

- Two person fiberglass console with partially enclosed Tee-top/windscreen.

Seating

- Crew (2 persons) on leaning bolster.

Equipment

- Stainless steel bow eye and two heavy-duty stainless steel transom tie-downs
- Mooring – two transom cleats, tow post (mounted at transom) and bow post.
- Under deck access hatch to aft hull cavity.
- Flush tiedowns – 4.
- 2 1/2 pound fire extinguisher and stowage; Bow locker

Bilge pumping/draining

- High capacity deck drains fitted w/ scupper trunks.
- Manual and Electric bilge pumps.

Hoisting

- Integral SS hoisting fittings.

Electrical

- 12 VDC electrical system (13 circuit).
- 2 battery banks (Optima D34M batteries) with selector/isolator switches.
- Dimmer switch (2) - instrument lights and separate dimmer for compass light.
- Handheld searchlight
- 2 Accessory plugs (marine and cigarette lighter style)

Navigation/communications

- Navigation lights in accordance with COLREGS '72 for vessels < 20 meters length.
- Electric horn.
- Magnetic compass.
- *OPTIONS*: communications and navigation equipment on request.

Fuel system

- Rotomolded polyethylene fuel tanks - 85 US gal (322 liters) and 48 US gal (181 liters) with fuel gauge and fuel/water separators.

Propulsion

- Twin OBM pre-rig with controls and gauges.
- Hydraulic steering

Additional Options Available

- Through Life Support based on operating hours, mission profile, location and operator profile; includes recommended maintenance schedule and spare parts and depot level maintenance
 - Fastener upgrade to metric sizes from imperial
 - Post Delivery Orientation: commissioning, introductory vessel instruction, systems operation and recommended maintenance (maximum 6 attendees per session; one week minimum duration) held on location
-



H753 OB LE



The overall appearance of the H753 including all available Zodiac options is a protected trademark of Zodiac.



Disclaimer: Photos may vary with options
Descriptions/Specifications are subject to change
August 2005

For more information please contact your Zodiac dealer or visit our website.