

# SRR

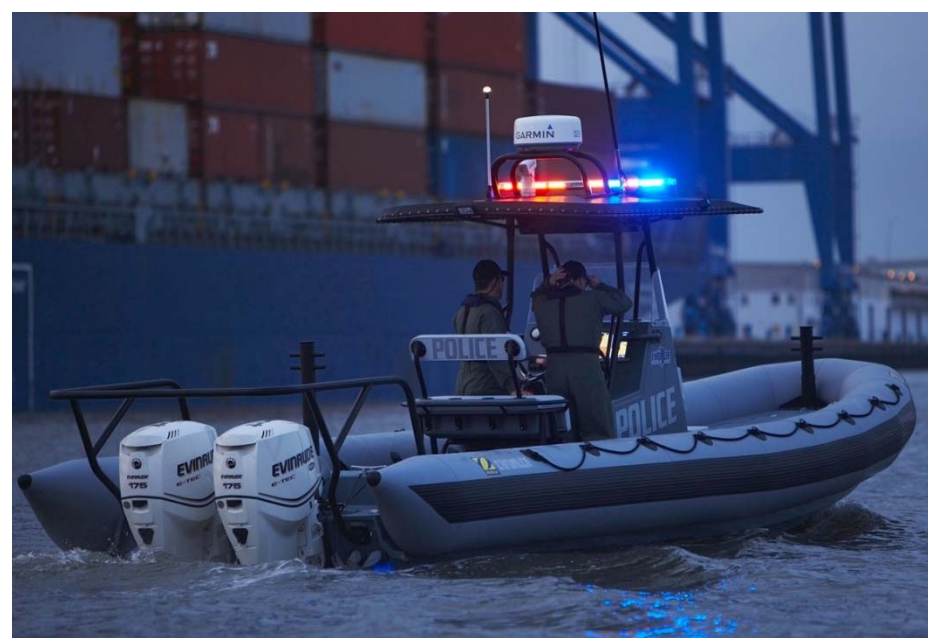
## SEA RIB™ RESPONDERS

### EVOLVED FROM A LONG LINE OF SEA RIB™

Zodiac Milpro's SEA RIB™ RESPONDERS are built for military use. They are simple, functional, tough, and have been designed to improve maintenance and user's comfort.

Their collar is made with Zodiac Milpro's special intercommunicating valves. It is removable to make maintenance and eventual change easier and faster.

The SRR decks are self draining, and feature a molded bow box and aft motor well to provide convenient storage volumes. These boats come with a large capacity built in fuel tanks with a deck access hatches to the fuel connections and gauge.

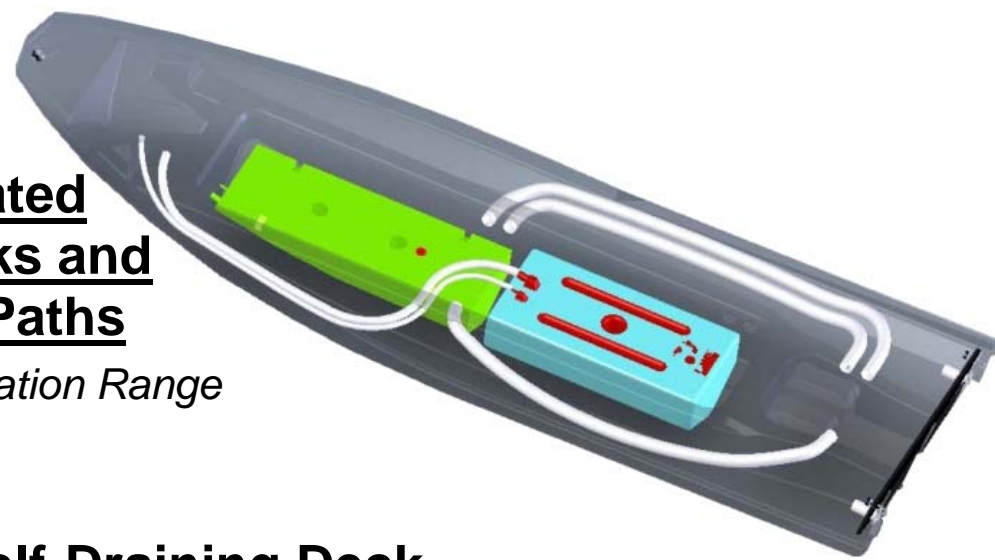


- **SELF-DRAINING**
- **SLIDE-ON COLLAR**
- **INTEGRATED FUEL TANK**
- **RAPID ACCESS DOOR**

	<b>SRR-420</b>		<b>SRR-530</b>		<b>SRR-650</b>	
max. number of person	6		12		15	
max. payload	750 kg	1653 lb	1150 kg	4409 lb	1850 kg	4078 lb
overall length	4,20 m	13' 9"	5,30 m	17' 5"	6,48 m	21' 3"
overall width	1,85 m	6'	2,20 m	7' 3"	2,56 m	8' 5"
weight empty	220 kg	485 lb	340 kg	750 lb	712 kg	1570 lb
shaft length	long – 20"		long – 20"		single XL – 25" twin long – 20"	
max. power	40 hp	30 kW	90 hp	68 kW	150 hp 2 x 80 hp	110 kW 2 x 59 kW
max. engine weight	98 kg	215 lb	189 kg	417 lb	234 kg 2 x 181 kg	516 lb 2 x 399 lb
fabric	1880 dtx CSM / neoprene		1670 dtx CSM / neoprene		1670 dtx CSM / neoprene	
hull storage dimensions	3,55 x 1,25 x 0,60 m <sup>3</sup> 11' 7" x 5' 1" x 3' 4"		4,46 x 1,53 x 0,81 m <sup>3</sup> 14' 8" x 5' 0" x 2' 8"		5,25 x 1,57 x 1,02 m <sup>3</sup> 17' 3" x 5' 2" x 3' 4"	

	<b>SRR-750</b>		<b>SRR-870</b>		<b>SRR-870 CABIN</b>	
max. number of person	16		18		12	
max. payload	2114 kg	4661 lb	2076 kg	4577 lb	1650 kg	3637 lb
overall length	7,40 m	24' 2"	8,79 m	28' 10"	8,79 m	28' 10"
overall width	2,90 m	9' 5"	3,05 m	10' 1"	3,05 m	10' 1"
weight empty	959 kg	2114 lb	1578 kg	3479 lb	2007 kg	4424 lb
shaft length	single XL – 25" twin long – 20"		single XXL – 30" twin XL – 25"		single XXL – 30" twin XL – 25"	
max. power	250 hp 2 x 150 hp	188 kW 2 x 113 kW	350 hp 2 x 250 hp	161 kW 2 x 186 kW	350 hp 2 x 250 hp	261 kW 2 x 186 kW
max. engine weight	294 kg 2 x 231 kg	648 lb 2 x 509 lb	390 kg 2 x 280 kg	860 lb 2 x 617 lb	390 kg 2 x 294 kg	860 lb 2 x 648 lb
fabric	1670 dtx CSM / neoprene		1670 dtx CSM / neoprene		1670 dtx CSM / neoprene	
hull storage dimensions	6,47 x 2,15 x 1,09 m <sup>3</sup> 21' 3" x 7' 1" x 3' 7"		7,78 x 2,27 x 1,37 m <sup>3</sup> 25' 6" x 7' 5" x 4' 6"		7,78 x 2,27 x 1,37 m <sup>3</sup> 25' 6" x 7' 5" x 4' 6"	

**SRR-650, SRR-750, SRR-870 and SRR-870 CABIN are approved for design category B (see technical data sheet or more details).**

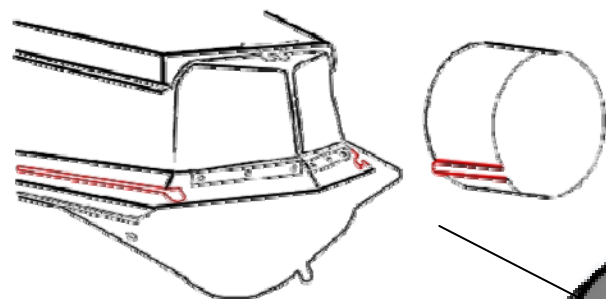
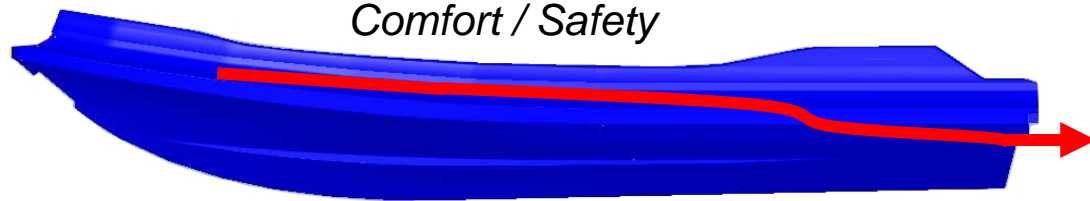


**Integrated Fuel Tanks and Cables Paths**

*Comfort / Navigation Range*

**Self-Draining Deck**

*Comfort / Safety*



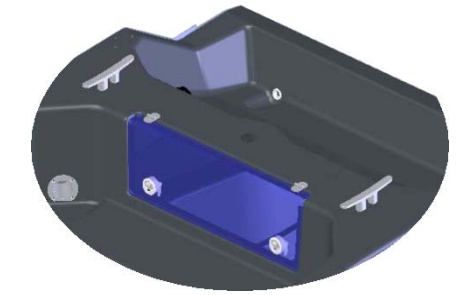
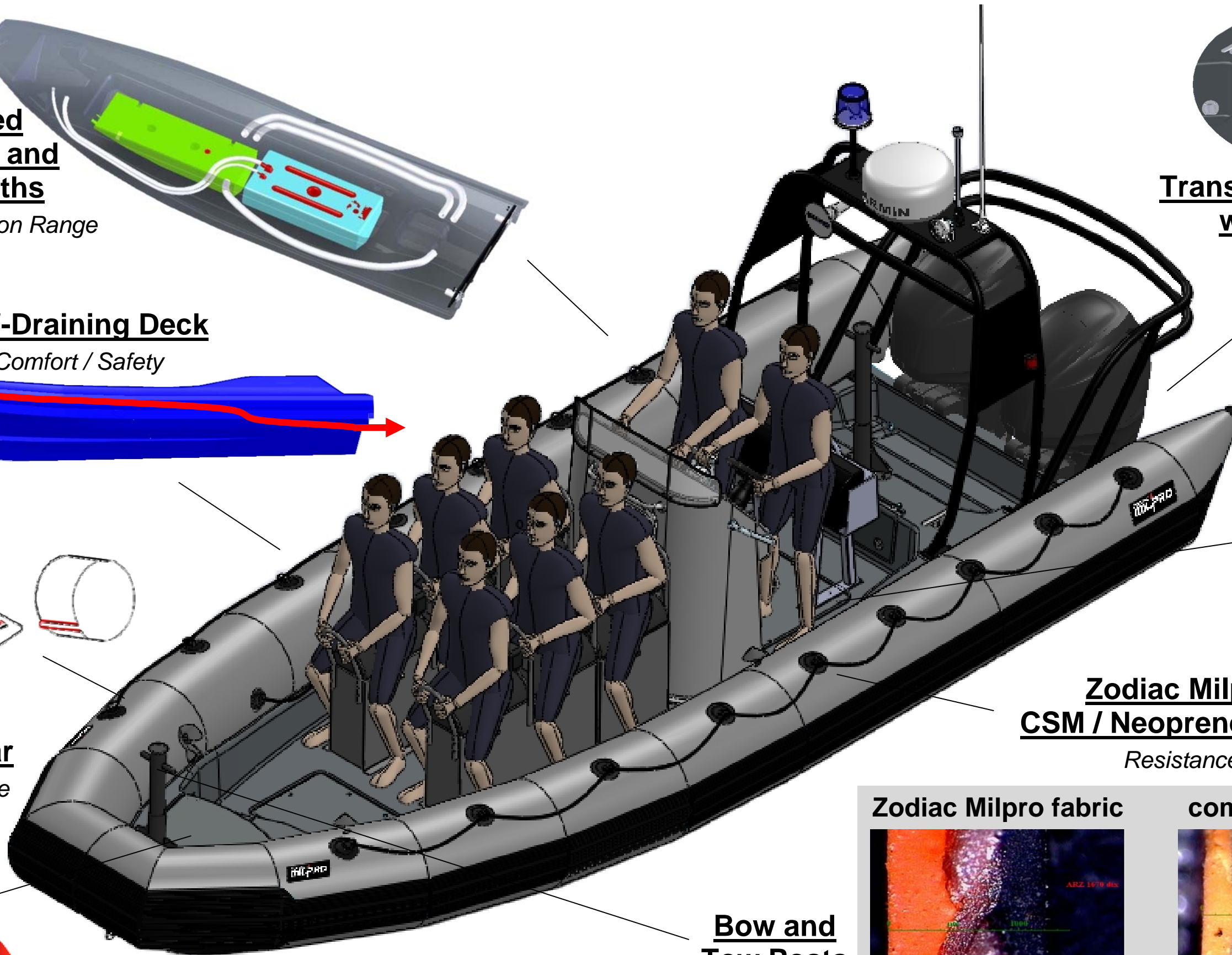
**Removable Slide-on collar**

*Easy Maintenance*



**Integrated Bow Box and Fuel-fill Zone**

*Comfort*



**Transom Motor Well with Locker**

*Comfort*

**Deck Access Hatches**

*Easy Maintenance*

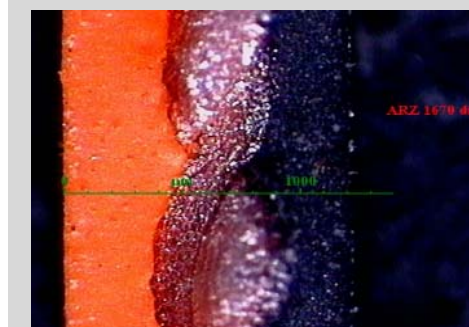
**Zodiac Milpro CSM / Neoprene Fabric**

*Resistance*

**Bow and Tow Posts**

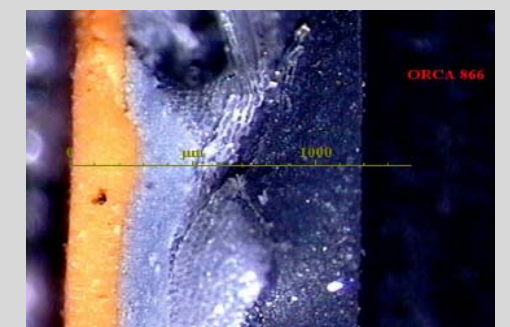
*Maneuver*

**Zodiac Milpro fabric**



CSM  
fabric  
neoprene

**competitor's fabric**



CSM  
neoprene  
fabric  
neoprene